

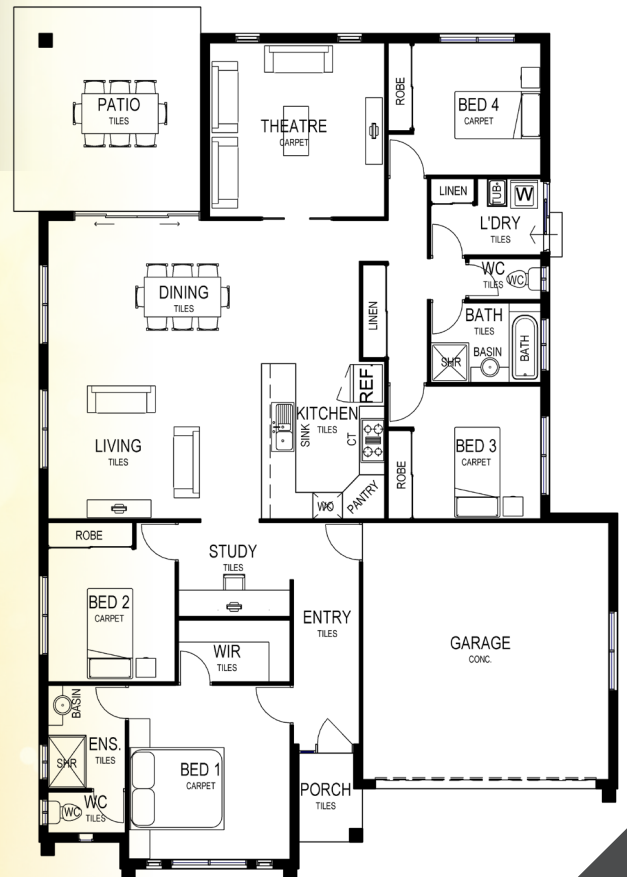
KURRIMINE 225



Design Size

Living	171.04m ²
Garage	36.48m ²
Patio	15.20m ²
Porch	2.84m ²
Total Area	225.56m²
Design width	13.6m
Design depth	18.8m

NOTE: Raised garden beds, stone features, brick fencing, decks and mature plants are not standard items.



☎ 1300 805 255
 ✉ admin@jazzhomes.com.au
 🌐 jazzhomes.com.au

jazz Homes
 Life is Better in a Jazz Home pty ltd