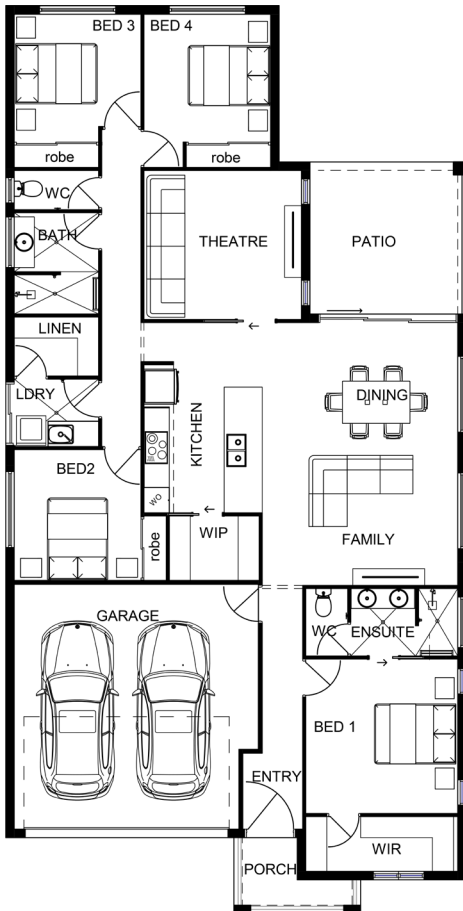


BAILEY 206



Width: 11.5m Depth: 21.6m



All the **luxury inclusions** you've come to expect from **Jazz Homes**.

- ✓ 2700 High Ceilings
- ✓ Spacious Bedrooms & Living Areas
- ✓ Stainless Steel Appliances
- ✓ High Quality Carpet & Tiles
- ✓ Stylish Bathroom Fixtures
- ✓ Min. 6 Star Energy Rating
- ✓ Split System Airconditioning
- ✓ Top Range Wash & Wear Paint
- ✓ Exposed Aggregate Driveway
- ✓ Storm Water to Kerb

Design Size

Porch	3.90m ²
Patio	13.32m ²
Garage	34.80m ²
Living	154.2m ²
Total House Area	206.24m²

NOTE: Raised garden beds, stone features, brick fencing, decks and mature plants are not standard items.

CONTACT THE JAZZ HOMES TEAM TODAY!



☎ 1300 805 255 ✉ admin@jazzhomes.com.au 🌐 jazzhomes.com.au