

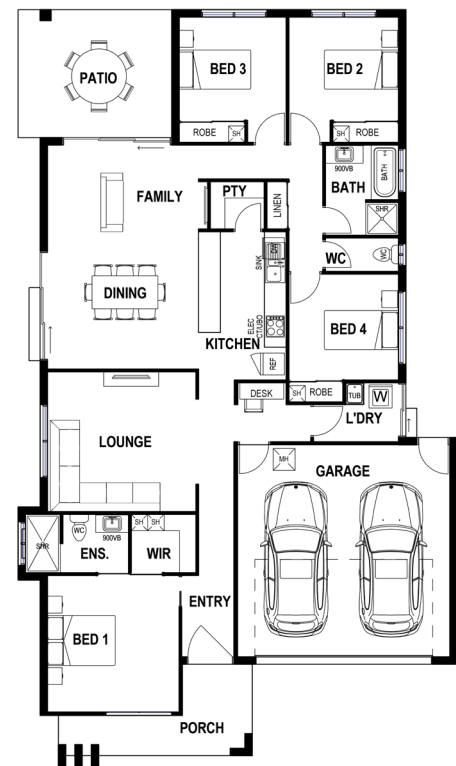
# WESTPOINT 202

SIGNATURE RANGE



## Design Size

Living	145.45m <sup>2</sup>
Garage	36.28m <sup>2</sup>
Patio	12.60m <sup>2</sup>
Porch	8.50m <sup>2</sup>
<b>Total Area</b>	<b>202.83m<sup>2</sup></b>
Design width	12.0m
Design depth	20.4m



**NOTE:** Raised garden beds, stone features, brick fencing, decks and mature plants are not standard items.

☎ 1300 805 255  
 ✉ admin@jazzhomes.com.au  
 🌐 jazzhomes.com.au

**jazz**Homes  
 Life is better in a Jazz Home pty ltd